



GWPA13- Glory of Great Wall Hiking (private)

One-day at Mutianyu

PRICE

Group size	8	7	6	5	4	3	2	1
Price/USD each	108	114	118	126	136	148	168	288

For group sizes over 9 please send us an email request to obtain the best possible rate.

Children under age 12 receive 50% discount. Children under 5 are free. Children's price is based on adult travelers. Please send us children's details in email.

Remember when comparing price, you get what you pay for. We don't earn money by taking you to commissioned shopping stops, a common practice in China, wasting your time. Our guides are carefully selected, highly trained and well-paid to be friendly and patient travel companions. We are not the cheapest, but we are one of the best.

BOOKING: customer@greatwallhiking.com

WHY US?

- Great Wall hiking specialist with western standard service
- No hidden cost; no unscheduled or mandatory shopping stops
- Licensed tour guides and experienced drivers; safe and comfortable vehicles
- Your satisfaction and safety is our priority
- Responsible travel

TRIP NOTES

Trip name: Glory of Great Wall Hiking: One-day at Mutianyu (private)

Trip code: GWPA13

Trip length: 1 day

Hiking route: Mutianyu

Meeting point & time: your hotel lobby at 08:00

Finishing point & time: your hotel at 15:00

Hiking duration: 2.5 hours

Hiking distance: 5 km

Best time to go: late March to early November

Physical rating: ★★☆☆☆☆ **Moderately easy**

Departure: your selected date, start and finish in Beijing, all year round

Highlights:

- *Fully restored Great Wall at Mutianyu
- *Stunning photo opportunity of the Great Wall
- *Toboggan ride downhill (optional)



Included:

- air-con vehicle with experienced driver
- personal expert English-speaking hiking tour guide
- entrance fees for the Great Wall
- one-way uphill cable car
- unlimited bottled water; snacks; lunch at local restaurant after the hike
- a certificate of completion for hiking on the Great Wall of China

Not included:

- travel insurance
- downhill cable car, chairlift, toboggan (slideway) or any other additional local facilities
- personal expenses
- tipping of hiking guide/driver recommended on good service on a 2:1 ratio separately

What to take:

comfortable shoes or boots, sunscreen, sun-glasses, bug/mosquito repellent, lip balm, cap, day pack

Notes:

- Toilet along the path on the Wall is busy and crowded. Please prepare before hiking and always carry toilet paper by yourself.
- Unlimited bottled waters are stored in our car/van today, and you need a day pack to carry them.
- We will bring trekking poles in our car/van and please tell your guide if you need one.
- It's recommended to prepare some snacks before your departure from Beijing if you don't like snickers.
- Travel insurance is optional and is the sole responsibility of travellers. It is encouraged to have coverage of injury or accident.
- As responsible travellers, we "take nothing but photos, leave nothing but footprint".

Customized pick-up & drop-off:

If you plan the hike on the first or last day of your duration in Beijing, we can include a customized pick-up or drop-off at the following points without additional cost. It's safe to store your luggage at our car/van.

Beijing Capital International Airport (PEK at T1/T2/T3): arrival before 9am or departure after 5pm

Beijing Railway Station: arrival before 10am or departure after 5pm

Beijing West Railway Station (train to/from Xi'an): arrival before 10am or departure after 5:30pm

Beijing South Railway Station (train to/from Shanghai): arrival before 10am or departure after 5pm

DETAILED ITINERARY

Great Wall at Mutianyu used to serve as the northern barrier defending the capital and imperial tombs in the Ming Dynasty (1368-1644). This section is surrounded by woodland and streams. It is a section restored in early 1980s, however it retains the original feature of ancient defence system. It's easy to access by 45 miles away from Beijing.

Pick you up at your hotel in Beijing at 8 am and drive to Mutianyu (1.5 hours). You will start the hiking around 9:30, and it will take about 2.5 hours to complete the hike. We will take a cable up to Watchtower 14, from where you can walk either westward to Watchtower 20 or eastward to Watchtower 6, alternatively you can do a loop walk from Watchtower 14 to Watchtower 20 and then come back to watchtower 6. There are 3 options downhill: by walking, by cable car (optional) or by toboggan (optional). A lunch at a local restaurant will be organized after the hiking before returning your hotel.



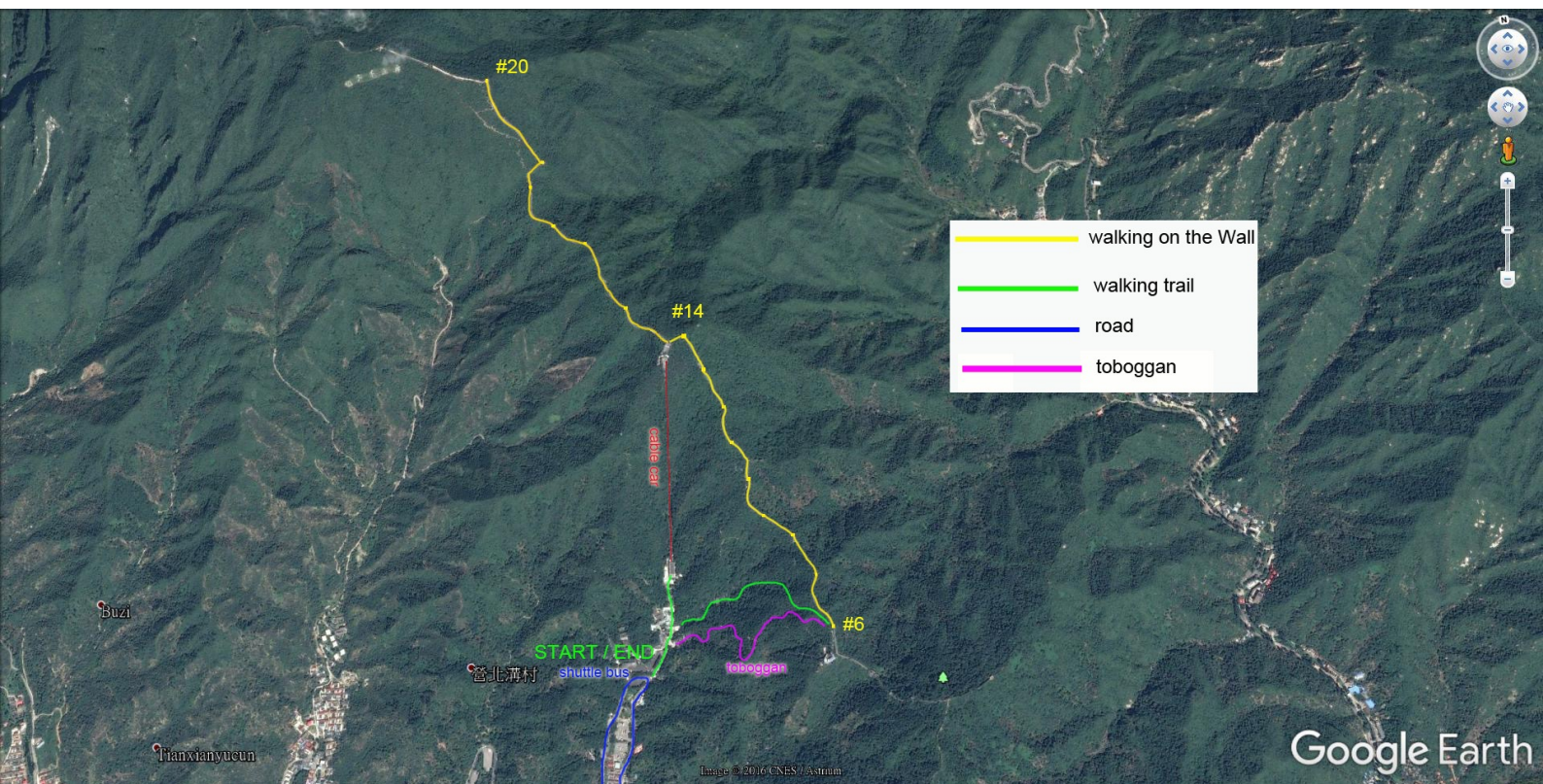
Mutianyu offers a wonderfully satisfying experience of the Wall. It has superb scenery, dense vegetation and many fine watchtowers in an excellent restored section which is about six meters broad. The brickwork is elaborate, with crenellations on both sides and finely curved eaves on some watch-tower roofs. There are decorative gables with animal statues, and tablets bearing calligraphy above some entrances.

PAYMENT

We accept credit card payment via Paypal which is safe and fast. **Non-refundable deposit** is required via Paypal at the time of booking, remaining payment can be paid via Paypal as well before leaving home. If you want to pay the outstanding balance upon arrival, then only cash payment (either USD or CNY) is accepted. Please note that Paypal may not work **when you are already in China** due to safety concerns.

CANCELLATION POLICY

Days before departure	Charge applicable
Not less than 14 days	Loss of deposit
Between 7 and 13 days	Loss of 50% of the total booking cost or loss of deposit; whichever is the greater
6 days or less	Loss of total booking cost



Advertisement

Mountain Escape Yangshuo, a hidden retreat in peaceful Yulong village, plan an exotic holiday and enjoy the breathtaking natural beauty of Yangshuo and its surrounding area.

Gary, founder at Great Wall Hiking, starts his adventure of a boutique accommodation project in South China's Yangshuo, well-known for its karst mountains and rivers landscape. His family is welcoming friends all over the world in the village. Staying is opened by **Feb 6, 2017**.

Get **30%** discount with promo code **GWH** when booking at www.mountainscapeyangshuo.com.

